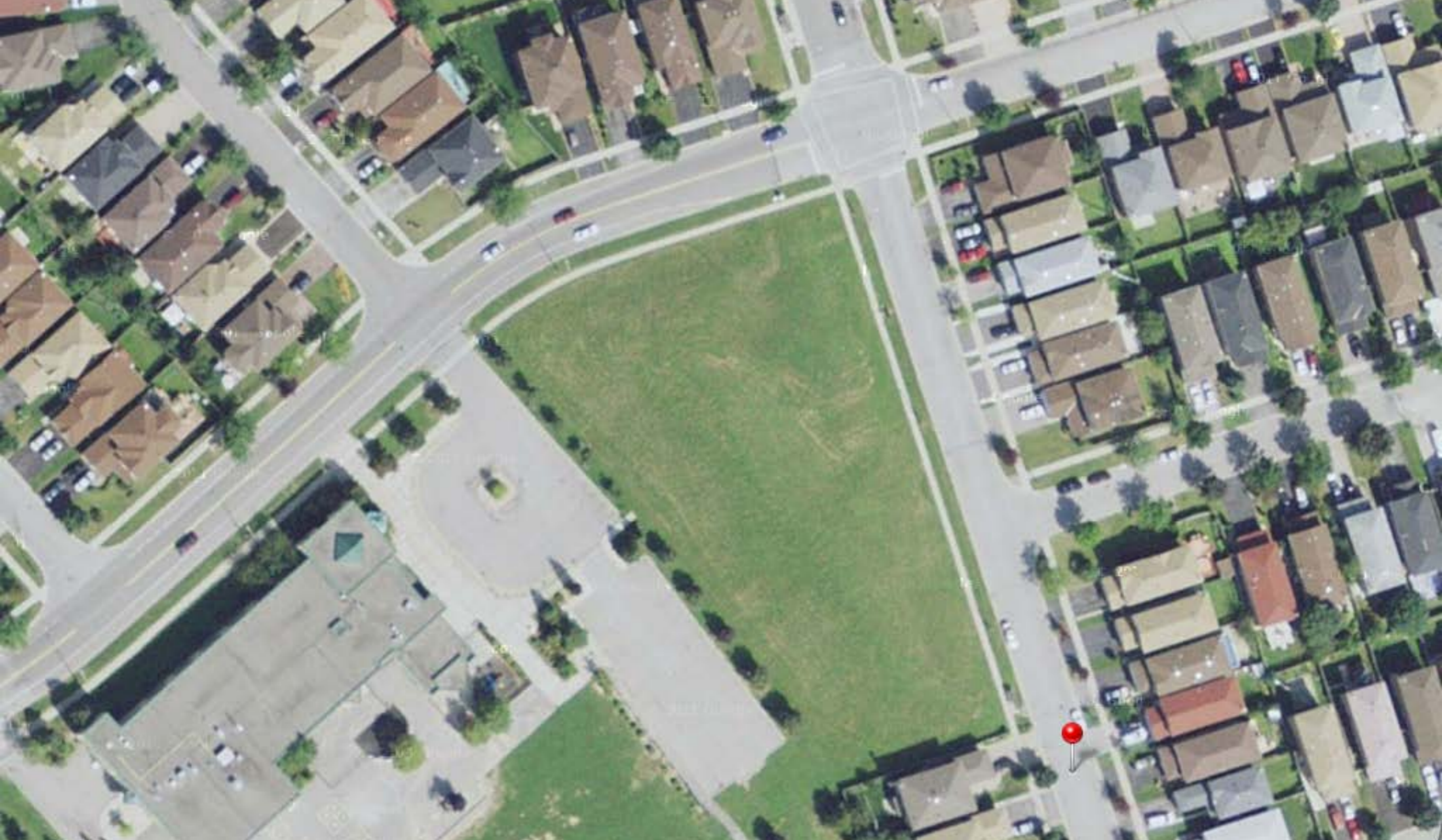




# Malvern Family Resource Centre

Malvern Family Resource Centre is currently comprised of a number of different facilities in various locations around north east Scarborough. The purpose of this proposal is to consolidate these services to a single site. In broad scope the centre is made up of different agencies currently occupying around 12,000 square feet. These departments include Seniors, Youth, Early years, Women's Place and Family Centres and could be considered as the core facilities associated with the building. To some extent, this proposal will also broaden the scope of services to include ancillary uses such as town hall meeting rooms and other community centered events. With these initial observations in mind, the following presentation will use drawings and commentary to explore some initial possibilities and suggestions with the new work.

John Boone Architect, October 28, 2011



# Malvern Family Resource Centre

The Site



# Malvern Family Resource Centre

Option 1



# Malvern Family Resource Centre

Option 2



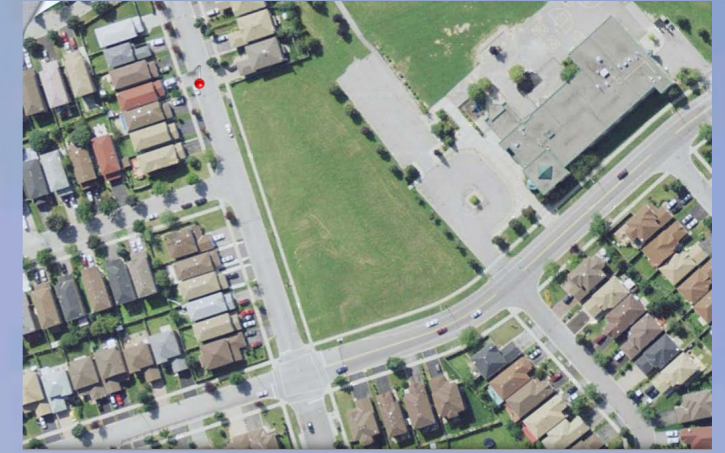
# Malvern Family Resource Centre

Option 2 with parking



# Malvern Family Resource Centre

Option 3



# Malvern Family Resource Centre

View from Sewells and Little Road

A one and two storey linear sequence of buildings are placed along Sewells and Littles Road creating an opportunity for the centre to engage with the community in a street level and pedestrian fashion.



# Malvern Family Resource Centre

Street Face



# Malvern Family Resource Centre

Single Building



# Malvern Family Resource Centre

View from Sewells Road



# Malvern Family Resource Centre

Gymnasium



# Malvern Family Resource Centre

Daycare



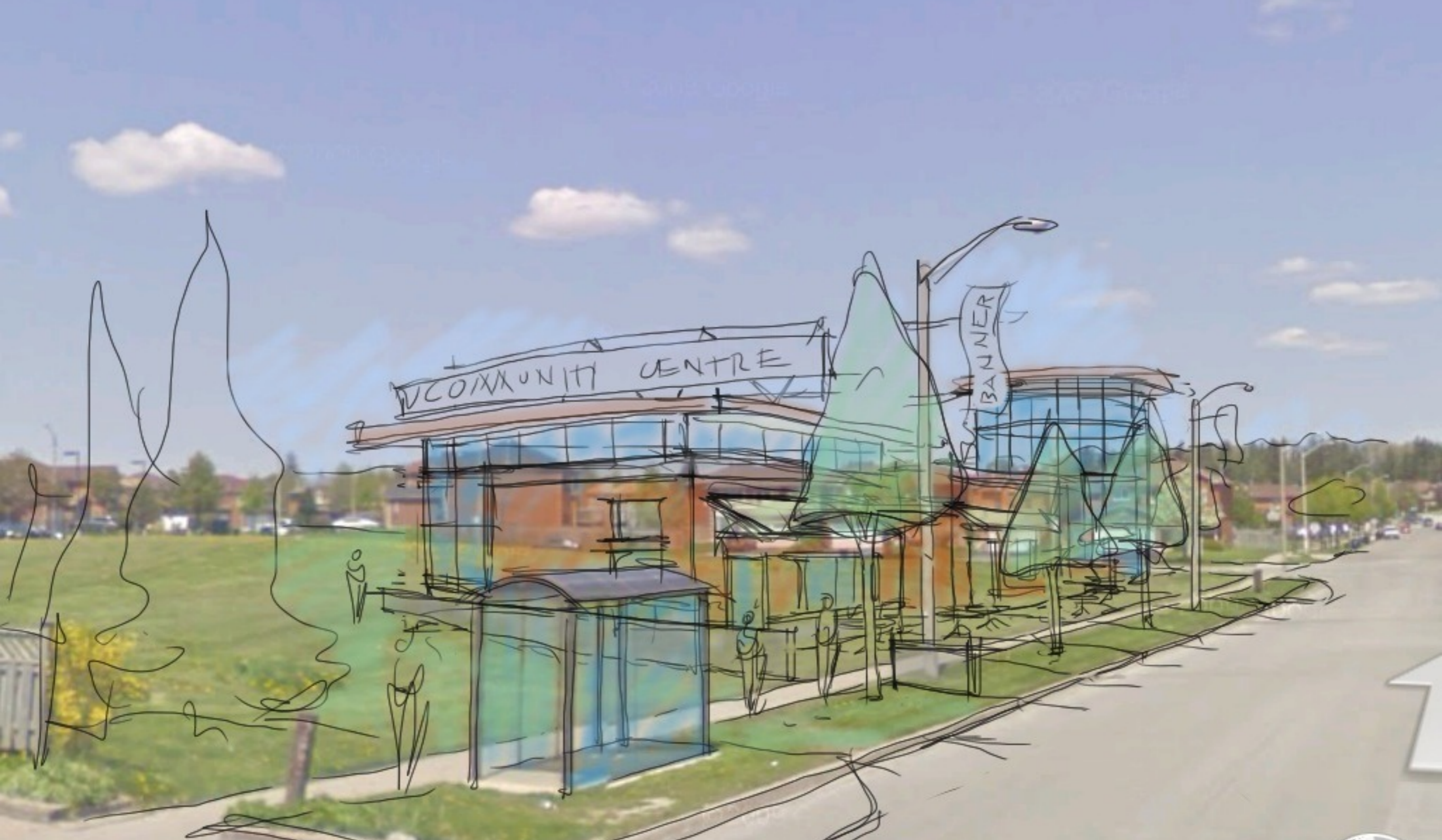
# Malvern Family Resource Centre

View from Littles Road



# Malvern Family Resource Centre

Public Building



# Malvern Family Resource Centre

Pedestrian Space